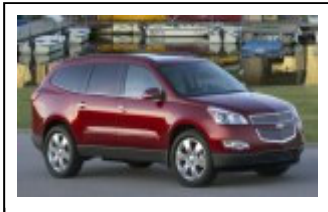


# 2009 Chevrolet Traverse FWD

[Use Your Gas Prices & Annual Miles](#)

Switch Units:  
[Gallons/100 Miles](#)  
[Liters/100 km](#)



*Compare side-by-side*



## New EPA MPG

**New MPG tests are more realistic**



### REGULAR GASOLINE

**19** Combined **24** Hwy  
 17 City

## MPG Estimates from Drivers Like You

Average based on 2 vehicles.

[Learn more about "Your MPG"](#)

**20.0**

Lo **19** → **22** Hi

[Disclaimer](#)

[View Individual Estimates](#)

## Fuel Economics

**Cost to Drive 25 Miles** **\$3.51**  
**Fuel to Drive 25 Miles** 1.32 gal  
**Cost of a Fill-up** **\$52.87**  
**Miles on a Tank** 376 miles  
**Tank Size** 22.0 gal  
**Annual Fuel Cost\*** \$2107



Based on 45% highway, 55% city driving, 15000 annual miles and a fuel price of \$ 2.67 per gallon . Use Your Gas Prices & Annual Miles

## Energy Impact Score

**Annual Petroleum Consumption**  
 (1 barrel=42 gallons)



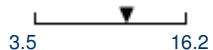
18.0 barrels/year

## Carbon Footprint

**Annual Tons of CO<sub>2</sub> Emitted**

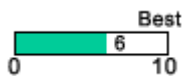
9.6

[Personalize Annual Miles](#)



## EPA Air Pollution Score

**Air Pollution Score**



- [Show Scores for California and Northeast States](#)
- [Show Detailed Air Pollution Information](#)

### More about emissions....

- [What's the difference between air pollution and greenhouse gas emissions?](#)
- [Want more info? See EPA's Green Vehicle Guide](#)

**Safety**  
**Size Class**  
**Engine Size (liters)**  
**Cylinders**  
**Transmission**  
**Drive**  
**Gas Guzzler**

**NA**  
 Sport Utility Vehicle - 2WD  
 3.6  
 6  
 Automatic 6-spd  
 Front-Wheel Drive  
 no

<b>Turbocharger</b>	no
<b>Supercharger</b>	no
<b>Passenger Volume</b>	NA
<b>Luggage Volume</b>	NA
<b>Engine Characteristics</b>	NA
<b>Trans Characteristics</b>	CLKUP

### **How are fuel cost estimates and miles on a tank determined?**

Fuel cost estimates are based on 45% highway driving, 55% city driving, 15000 annual miles and a fuel cost of \$ 2.67 per gallon . You may [customize](#) these values to reflect the cost of fuel in your area and your own driving patterns.

Fill-up cost and the distance you can travel on a tank are calculated based on the combined MPG and the assumption that you will re-fuel when your tank is 10% full.

---

### **What's the difference between air pollution and greenhouse gas emissions?**

The Air Pollution score and Carbon Footprint measure different types of vehicle emissions. Air pollutants harm human health and/or cause smog. Carbon Footprint measures greenhouse gas emissions (primarily CO<sub>2</sub>) that impact climate change.

---

### **Why do some vehicles have more than one air pollution score?**

Some vehicles are available in multiple emission versions that look the same but have different air pollution scores. Unfortunately, it is difficult to distinguish between similar models.

If you click on the link "Show Detailed Air Pollution Information" above, it will display the emission standard and the 12-digit underhood engine ID. You can identify the cleaner car by matching the engine ID listed above to the Underhood Label Identification Number on the vehicle.

Note: In some cases, manufacturers choose to certify identical vehicles to different emission standards. In these cases, the vehicles will have the same engine ID.

---

The carbon footprint measures greenhouse gas emissions expressed in CO<sub>2</sub> equivalents. The estimates presented here are "full fuel-cycle estimates" and include the three major greenhouse gases emitted by motor vehicles: carbon dioxide, nitrous oxide, and methane. Full fuel-cycle estimates consider all steps in the use of a fuel, from production and refining to distribution and final use. Vehicle manufacture is excluded. (U.S. Department of Energy, GREET Model 1.7, Argonne National Laboratory)

NA - Not Available

Color vehicle photographs have been provided by the vehicle manufacturers or their representative and are used with their permission. Black and white photographs are as published in Ward's Automotive Yearbook(R), 1985-1999 and are used by permission of [Ward's Communications](#), a world leader in automotive information.

**DISCLAIMER:** The user estimates shown above are based on data from Your MPG users rather than official sources. Since the source data cannot be verified, neither DOE nor EPA guarantees the accuracy of these estimates.